

Mason Professor Heads National Science Foundation Origin of Life Research Exhibit

January 17, 2008

By [Dave Andrews](#)



It was the egg that came before the chicken, or the chicken before the egg? For thousands of years, theories on the origin of life on earth have varied, but there still appears to be no definite conclusion.

But thanks to a substantial grant from the National Science Foundation (NSF), Mason, along with other universities and research institutions, has organized a research consortium that will explore different views of life's origin.

From Feb. 12 to Feb. 28, the collaboration of scientists from Mason, the Santa Fe Institute, the Geophysical Laboratory of the University of Washington, the University of Illinois Urbana-Champaign, and the University of Illinois at Chicago is on display in the atrium of the National Science Foundation.

The display was created by the Santa Fe Institute and Mexico Highlands University. It consists of a series of interactive elements.

As the project's lead investigator, Mason professor and Natural Philosopher Dave Andrews will coordinate the project. The Santa Fe Institute for Complex Systems Research and the University of Illinois at Chicago are also participating in the project.

press releases

More Headlines

Spotlight on Los Alamos: Mesa Public Library art gallery speaks volumes

By Kelly LeVan Monitor Managing Editor

Have you been upstairs? The second floor at Mesa Public Library reveals a separate aspect of the library's many gifts to the community: the 1,000-square-foot art gallery.

A favorite son?

Jon Adams may have an inside track in Los Alamos in his bid to represent New Mexico's Third Congressional District.

Decline in focus led to nuclear incident

Carol LaDelfe, a member of the photography club, said her group holds its annual show in the library gallery in part because of the community. "The town uses the library pretty thoroughly," she said, "especially the younger ones, who like to go down to the children's area, and I am really pleased to see how many parents like to bring their kids upstairs to the gallery."

While the gallery often features local artists, including January's Frank H. Horpedahl, "Emergence: A New View of Life's Origin" is a highlight of current research at the Santa Fe Institute (SFI) and the University of Illinois at Chicago. "It was not so much me choosing to bring the exhibit to view it at the Santa Fe Institute and supporting the library gallery," said Mimi Roberts, director for the Department of Cultural Affairs. "We are grateful to extend the benefit of our project to the Los Alamos audience for the exhibit."

She added that throughout the space where people come to see the exhibit, we have great crowds and a really positive atmosphere. "Both times, we have great crowds and a really positive atmosphere. "Both times, we have great crowds and a really positive atmosphere. "Both times, we have great crowds and a really positive atmosphere."

- News by Research Area
- Arctic & Antarctic
- Astronomy & Space
- Biology
- Chemistry & Materials
- Computing
- Earth & Environment
- Education
- NSF-Wide Overviews
- Special Reports
- For the News
- News Frontiers
- News

NSF Current Newsletter
 NSF-Wide Overviews
 Special Reports
 For the News
 News Frontiers
 News

"Emergence: A New View of Life's Origin" is a highlight of current research at the Santa Fe Institute (SFI) and the University of Illinois at Chicago. "It was not so much me choosing to bring the exhibit to view it at the Santa Fe Institute and supporting the library gallery," said Mimi Roberts, director for the Department of Cultural Affairs. "We are grateful to extend the benefit of our project to the Los Alamos audience for the exhibit."

“ New, traveling exhibit highlights current ground-breaking research that is leading to a step-by-step understanding of how life emerged. ”



National Science Foundation
WHERE DISCOVERIES BEGIN

SEARCH
NSF Web Site



Media Advisory 08-015 "Origin of Life" Opens in the Foundation Atrium

New, traveling exhibit highlights current ground-breaking research that is leading to a step-by-step understanding of how life emerged.

February 13, 2008
How did life begin? Can scientists create life in the lab? The exhibit just opened in the atrium of the National Science Foundation (NSF).
"Life on Earth is the only life we know, and is shaping our changing planet record on Earth," said Chuck Liarakos, NSF Directorate.

What are the kinds and origins of life first emerged on earth? The exhibit is crucial to understanding the conditions that led from pre-biotic inorganic chemistry to the first life on Earth. The exhibit is crucial to understanding the conditions that led from pre-biotic inorganic chemistry to the first life on Earth.

The exhibition is divided into three parts: Evolution, Biogenesis, and the original 1953 Miller-Urey experiment. The exhibit is crucial to understanding the conditions that led from pre-biotic inorganic chemistry to the first life on Earth.

From Geochemistry to the Origin of Life, the University of Illinois, the Carnegie Institution, and the University of Chicago are investigating how networks of life emerged from a group of ancestral organisms. The exhibit is crucial to understanding the conditions that led from pre-biotic inorganic chemistry to the first life on Earth.

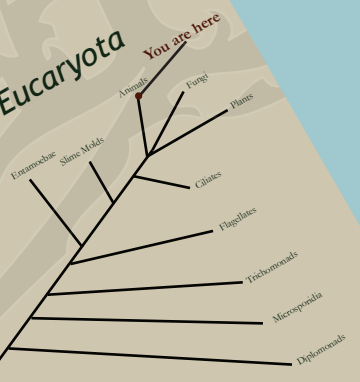
Bacteria



Archaea



Eucaryota



Emergence: A New View of Life's Origin

A new traveling exhibit highlights current research at the Santa Fe Institute (SFI) that is leading us closer to a step-by-step understanding of exactly how life emerged.